

## *The KSU Biotechnology Research Working Group*

The Research Working Group consists of faculty and staff from both KSU's Land Grant Program and Division of Mathematics and Sciences. Biotechnology research opportunities for the BIO 410 Special Problems course are already available with the following research areas:

- Bioremediation and environmental science
- Fish genetics
- Viticulture
- Tissue culture
- Molecular genetics of paddlefish
- Human nutrition and toxicology
- Molecular genetics of pawpaw
- Molecular microbiology
- Entomology
- Applied impacts of genetically engineered crops
- Prawn molecular genetics
- Nutritional biochemistry
- Human nutrition



*It is the policy of Kentucky State University not to discriminate against any individual in its educational programs, activities or employment on the basis of race, color, national origin, sex, disability, veteran status, age, religion, or marital status.*

Dr. Nancy Reagan Wallin  
Division of Mathematics and Sciences  
Kentucky State University  
132B Carver Hall  
Frankfort, KY 40601



THE KENTUCKY STATE UNIVERSITY  
**BIOTECHNOLOGY**  
for  
**Biology Majors**

Website: <http://biotech.kysu.edu/>

# Kentucky State University Biotechnology For Biology Majors



Biotechnology impacts human health, medical diagnoses, forensics, pharmaceuticals, nutrition, the environment, and agriculture. Training in biotechnology and molecular biology techniques is critical for students who wish to pursue careers in the life sciences including agriculture. Starting in Fall 2007, the KSU Division of Mathematics and Science, in collaboration with the university's Land Grant Program, will offer courses in Biotechnology for Biology Majors. These courses will provide a foundation for the principles of biotechnology and molecular biology, as well as laboratory experiences that will provide "hands on" training.

## *The new courses in Biotechnology will be:*

### Careers in Biotechnology

Biotechnology I: Tissue Culture

Biotechnology II: DNA Sciences

Biotechnology III: Proteins

Biotechnology IV: Advanced Biotechnology

Scientific Writing and Presentation in Biotechnology

Global Perspectives in Biotechnology

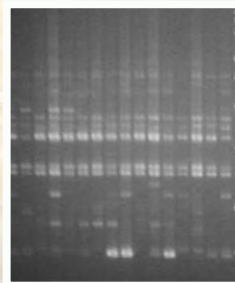
Forensics

Environmental Sciences and Bioremediation

BIO 410: Special Problems in Biology

## *Career Opportunities in Biotechnology*

The Biotechnology curriculum at KSU will prepare our graduates for employment in the state and for graduate or medical school through an exciting new curriculum and unique research experiences with state of the art equipment and cutting edge techniques. Many new jobs will be created that require a background in this area. The biotechnology industry has doubled in the past few years and more opportunities are expected in healthcare, food production, environmental sciences, wildlife management, computational biology and bioinformatics, engineering disciplines, business, law and justice, history and anthropology, military, space exploration, bench sciences, and bioscience communication.



## *For more information about Biotechnology Courses for Biology:*

Dr. Nancy Reagan Wallin, Biology Coordinator  
Division of Mathematics and Sciences  
Kentucky State University  
Frankfort, KY 40601  
(502) 597-6095  
nancy.wallin@ksu.edu

Dr. Kirk Pomper, Biotechnology Research Contact  
Atwood Research Facility  
KSU Land Grant Programs  
Frankfort, KY 40601  
(502) 597-5942  
kirk.pomper@ksu.edu

## *Financial Aid, Scholarships, and Other Opportunities*

KSU offers merit and need-based financial assistance. Merit-based scholarships also are available through the Division of Mathematics and Sciences. Work-study positions also are available. Information on a wide variety of financial aid opportunities can be accessed at: [http://www.ksu.edu/colleges\\_schools/cmsth](http://www.ksu.edu/colleges_schools/cmsth), [http://www.ksu.edu/admissions/admission\\_requirements](http://www.ksu.edu/admissions/admission_requirements), <http://biotech.ksu.edu>